

ALTERNATES

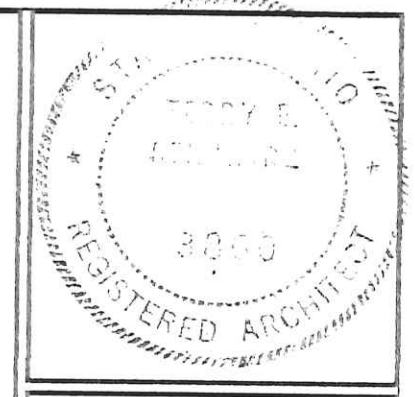
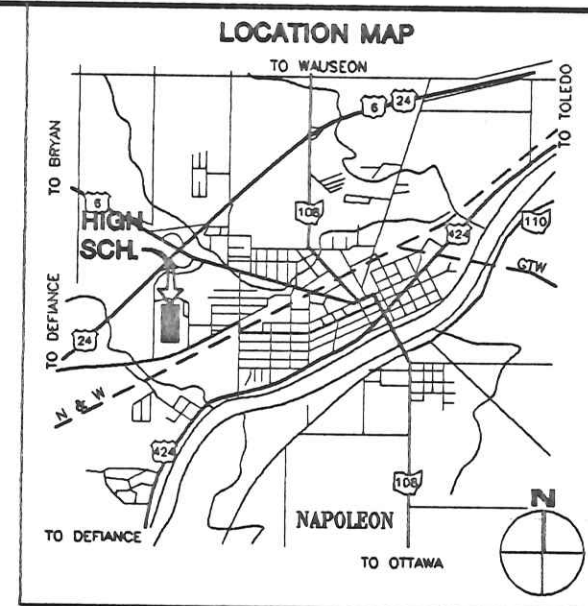
- H-1 ALL WORK ASSOCIATED WITH OVERLAY AND SITE IMPROVEMENTS TO THE BUS TRANSFER AND STUDENT PARKING LOTS, SEE SHEET HA-1b
- H-2 ALL WORK ASSOCIATED WITH THE PARKING LOT IMPROVEMENTS TO THE SOUTH OF THE BUS MAINTENANCE FACILITY.
- H-3 ALL WORK ASSOCIATED WITH THE CONSTRUCTION OF A NEW CONCRETE WALKWAY FROM BRIARHEATH AVE. TO WILDCAT DRIVE
- H-4 ALL WORK ASSOCIATED WITH THE RE-TOPPING OF THE EXISTING ASPHALT WALKWAY PATHS.
- H-5 (BY G.C., SEE SHEET HA-2)
- H-6 (BY G.C., SEE SHEET HA-2)
- H-7 OMIT ALL WORK ASSOCIATED WITH THE CONSTRUCTION OF NEW SIDEWALK WHICH LEADS TO NEW EXTERIOR DOORS, SEE DETAIL 4/HA-1b

PRIME CONTRACTOR LEGEND

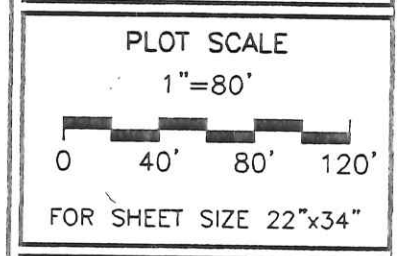
- SC SITE CONTRACTOR
- GC GENERAL CONTRACTOR
- RC RESTORATION CONTRACTOR
- PC PLUMBING CONTRACTOR
- HC HVAC CONTRACTOR
- EC ELECTRICAL CONTRACTOR

KEYNOTE LEGEND

- ① REMOVE EXISTING ASPHALT WALK, FILL VOID TO GRADE W/ TOP SOIL, SEED AND MULCH (BASE BID)
 - ② ALT. H-4, OVERLAY EXISTING ASPHALT WALK, SEE DETAIL 5/SD-1 TYPE D1
 - ③ NEW PAVEMENT, SEE DETAIL 5/SD-1 TYPE A (SIM), OVER EXISTING BASE (BASE BID)
 - ④ PLACE TOPSOIL FROM WORK AND PARKING EXCAVATION IN LOW AREAS. DO NOT PLACE MORE THAN 4\"/>
- (BY SITE CONTRACTOR, U.O.N.)
- ⑤ EXIST. 4\"/>
 - ⑥ EXIST. 4\"/>
 - ⑦ EXIST. 6\"/>
 - ⑧ EXIST. 4\"/>
 - ⑨ EXIST. ELECTRICAL LINE
 - ⑩ EXIST SPRINKLER AND WIRES



BEILHARZ ARCHITECTS INCORPORATED
 701 1/2 WEST FIRST STREET • DEFIANCE OH IO 43512
 TELEPHONE N.D. 419-782-6211
 FAX 419-782-6722



ISSUE DATE
 12-19-97
 FOR BIDS

©1997 BEILHARZ ARCHITECTS, INC.

THE CONTENT OF THIS DRAWING IS NOT INTENDED TO BE GUARANTEED, NOR IS IT TO BE CONSIDERED A CONTRACT. THE CONTRACTOR SHALL BE RESPONSIBLE FOR VERIFYING ALL DIMENSIONS AND CONDITIONS OF THE SITE PRIOR TO CONSTRUCTION. ANY REVISIONS OR CHANGES TO THIS DRAWING SHALL BE MADE BY THE ARCHITECT. THE ARCHITECT SHALL BE RESPONSIBLE FOR OBTAINING ALL NECESSARY PERMITS AND APPROVALS. THE ARCHITECT SHALL BE RESPONSIBLE FOR THE PROTECTION OF ALL UTILITIES AND STRUCTURES ON THE SITE. THE ARCHITECT SHALL BE RESPONSIBLE FOR THE PROTECTION OF ALL ADJACENT PROPERTIES AND STRUCTURES. THE ARCHITECT SHALL BE RESPONSIBLE FOR THE PROTECTION OF ALL ADJACENT PROPERTIES AND STRUCTURES.

HIGH SCHOOL
 NAPOLEON AREA SCHOOLS
 701 BRIARHEATH AVENUE
 NAPOLEON, OHIO

SITE PLAN
 SITE DETAILS

PROJECT: 94-1781M

DRAWN BY: SLB, AWB

CHECKED BY: AWB, JSO

SHEET

HA-1a

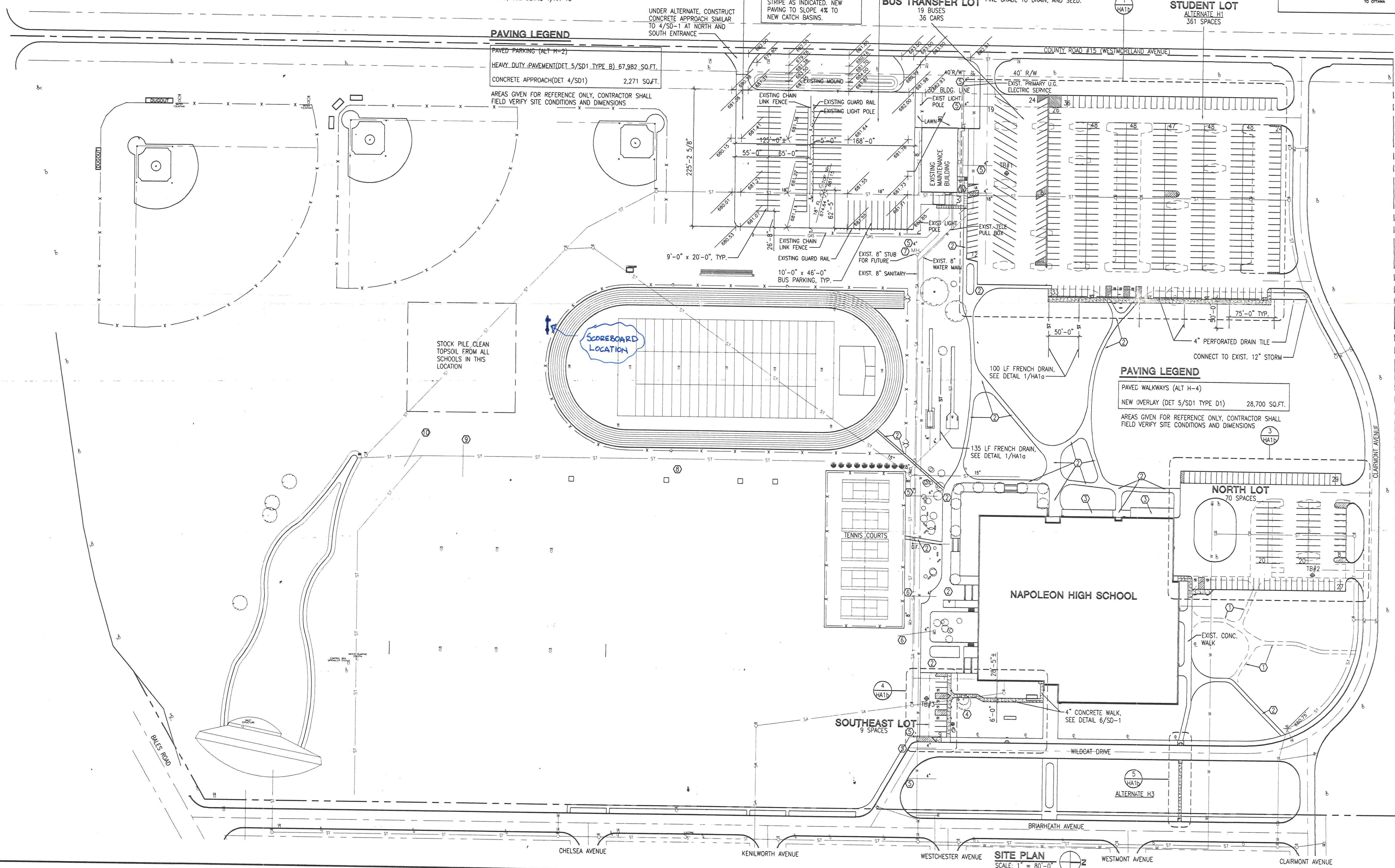
OF 8

PAVING LEGEND

- PAVED PARKING (ALT H-2)
 - HEAVY DUTY PAVEMENT (DET 5/SD1 TYPE B) 67,982 SQ.FT.
 - CONCRETE APPROACH (DET 4/SD1) 2,271 SQ.FT.
- AREAS GIVEN FOR REFERENCE ONLY. CONTRACTOR SHALL FIELD VERIFY SITE CONDITIONS AND DIMENSIONS

PAVING LEGEND

- PAVED WALKWAYS (ALT H-4)
 - NEW OVERLAY (DET 5/SD1 TYPE D1) 28,700 SQ.FT.
- AREAS GIVEN FOR REFERENCE ONLY. CONTRACTOR SHALL FIELD VERIFY SITE CONDITIONS AND DIMENSIONS



SITE PLAN
 SCALE: 1" = 80'-0"